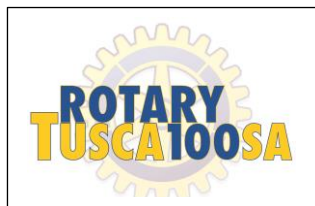




# Rotary Club of Tuscaloosa

## New Member Orientation

2017 – 2018



# Rotary Club of Tuscaloosa

## New Member Orientation

2017 – 2018

### Overview

- **Rotary International**

- World's oldest service club
- Started in 1905 by Chicago attorney Paul Harris
- 35,000 clubs in 200+ countries; 1.2 million members worldwide in 529 districts

- **Rotary Club of Tuscaloosa**

- Established in 1917. Currently has 155 members
- Member of District 6860 (northern half of Alabama)
- Meetings: Noon on Tuesdays at Indian Hills Country Club
- Fiscal year: July 1 through June 30

- **Mission of Rotary**

- **Service above Self** – in the community, in the workplace and throughout the world. The club is non-political and is open to all cultures, races and creeds.

- **Benefits of Membership**

- The fulfillment of serving and supporting your community and the world
- Networking with influential, productive and ethical members of the community
- Personal growth and development
- Friendship, fellowship and fun

- **Responsibilities of Membership**

- Serve the club, community and the world
- Consistent attendance and participation
- Assist in sustaining and increasing our membership
- Financially support the club, including dues, contribute to the Rotary Foundation

- **4-Way Test - Adopted by Rotary International in 1943**

Of the things we think, say or do:

- Is it the TRUTH?
- Is it FAIR to all concerned?
- Will it build GOODWILL and BETTER FRIENDSHIPS?
- Will it be BENEFICIAL to all concerned?

- **Maximize your Rotary Experience**

- Attend and make connections
- Serve both our club and the community
- Financially support our club and international projects
- Help us grow

- **Attendance Expectations**

- Attend or make up at least 60% of meetings

- **Make-ups** (two-week window on both sides of missed meeting)

- Tuscaloosa Morning Club – Thursdays at 7:00 a.m. at Indian Hills Country Club
- Online – at [www.rotaryclubone.org](http://www.rotaryclubone.org)
- Committee meetings (e.g., Honor Flight Committee)
- Community service projects (e.g., Salvation Army bell ringing at Christmas)
- Report your makeups to Caroline Williams or sign the Make-up Sheet on the registration desk

## Rotary International Leadership

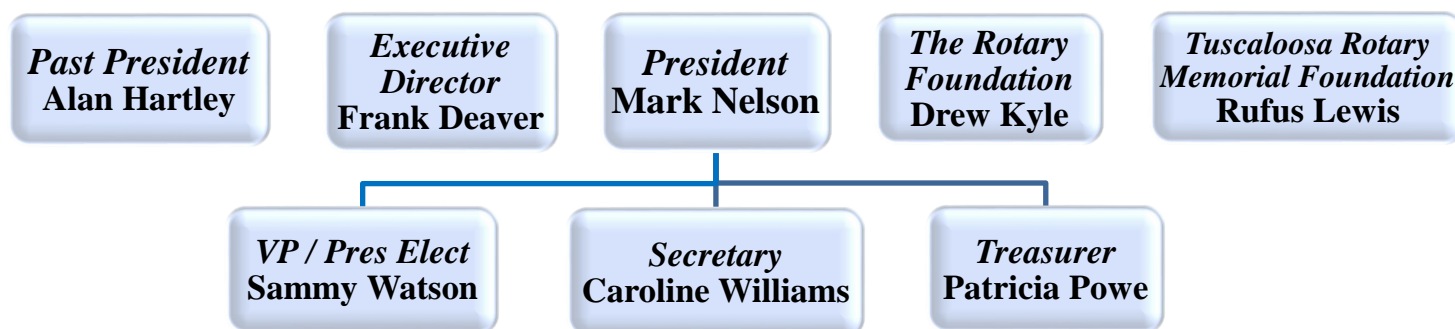
**Rotary International President – Ian Riseley – Sandringham Club, Victoria, Australia**

**Rotary International Conference – June 23-27, 2018 in Toronto, Canada**

## District 6860 Leadership

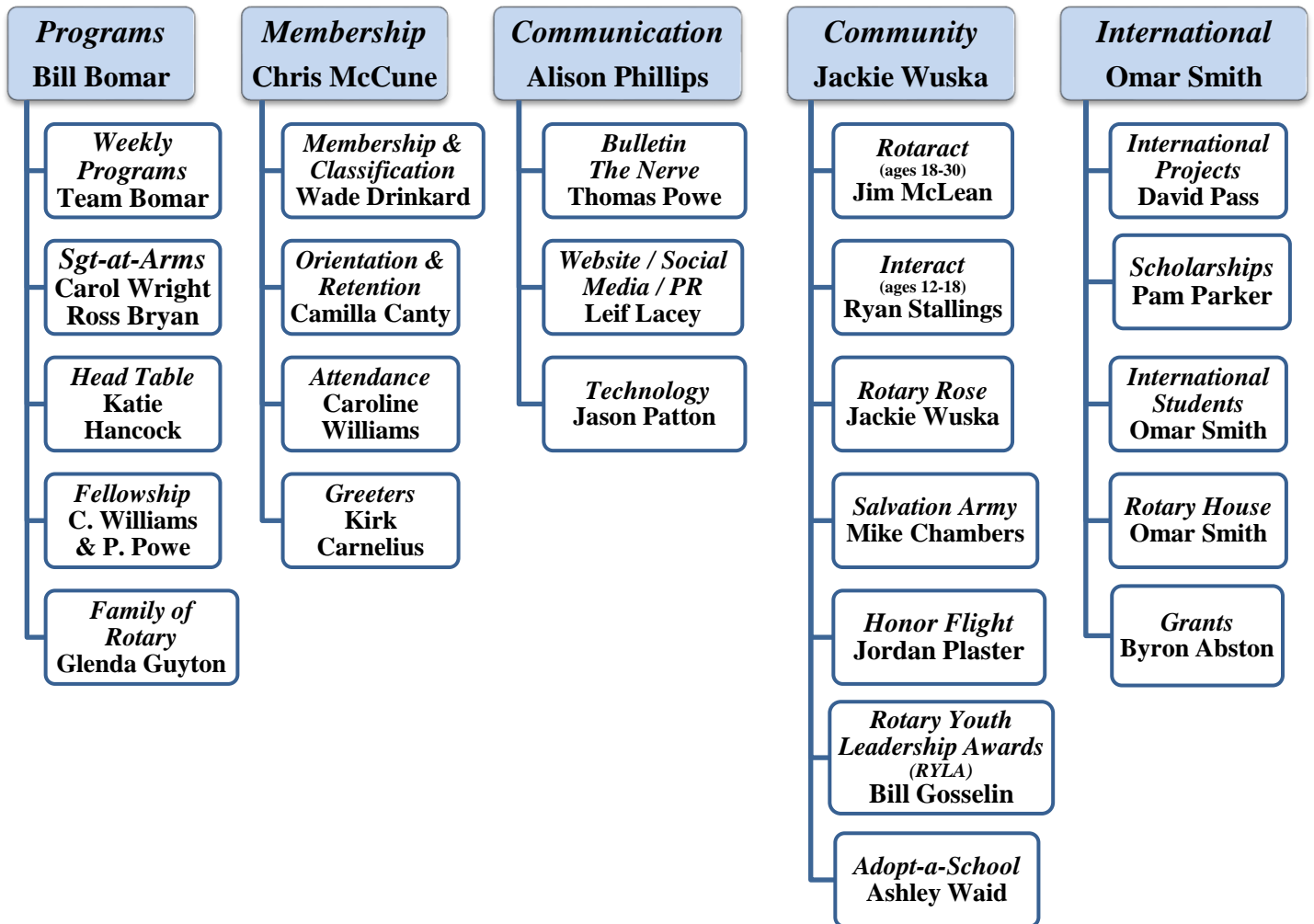
<b>District Governor</b>	Sue Mitchell, Ph.D.	Dist. Governor's home club is Decatur Daybreak Club
<b>Asst. Dist. Governor – Area E</b>	Karen Baldwin	Serving clubs of Tuscaloosa, Aliceville, Gordo, Reform
<b>Asst. Dist. Governor – Area J</b>	Susan Caples	Serving clubs of Birmingham, Jasper

## Club Leadership



Mark Nelson	President	205.348.4786	<a href="mailto:mnelson@ua.edu">mnelson@ua.edu</a>
Sammy Watson	Vice President	205.750.5017	<a href="mailto:swatson@dchsystem.com">swatson@dchsystem.com</a>
Caroline Williams	Secretary	205.391.2524	<a href="mailto:caroline.williams@bbva.com">caroline.williams@bbva.com</a>
Patricia Powe	Treasurer	205.348.6755	<a href="mailto:pppowe@ua.edu">pppowe@ua.edu</a>
Alan Hartley	Past President	205.349.2424	<a href="mailto:ahartley@morrisonsmithcpa.com">ahartley@morrisonsmithcpa.com</a>
Frank Deaver	Executive Director	205.339.9728	<a href="mailto:tuscrotary@gmail.com">tuscrotary@gmail.com</a>
Drew Kyle	The Rotary Foundation	205.345.5573	<a href="mailto:dkyle@kyleofficesolutions.com">dkyle@kyleofficesolutions.com</a>
Rufus Lewis	Tusc. Rotary Mem. Foundation	205.556.2207	<a href="mailto:rufus.lewis76@gmail.com">rufus.lewis76@gmail.com</a>

## Club Directors



Bill Bomar	Programs	205.348.7551	<a href="mailto:bbomar@ua.edu">bbomar@ua.edu</a>
Chris McCune	Membership	205.331.8516	<a href="mailto:chris.mccune@whitetailproperties.com">chris.mccune@whitetailproperties.com</a>
Alison Phillips	Communication	205.391.1118	<a href="mailto:aphilips@parkertowing.com">aphilips@parkertowing.com</a>
Jackie Wuska	Community	205.345.6640	<a href="mailto:jackie@uwwa.org">jackie@uwwa.org</a>
International	Omar Smith	205.345.1426	<a href="mailto:omarbudo@aol.com">omarbudo@aol.com</a>

## The Rotary Foundation (TRF)

During the past 100 years, The Rotary Foundation (of Rotary International) has spent \$3 billion on life-changing, sustainable projects. More than 90% of donations go directly to supporting international Rotary projects. TRF has wiped out 99.9% of all polio cases. A child can be protected from polio with as little as 60 cents. For every \$1 Rotary commits to polio eradication, the Bill & Melinda Gates Foundation commits \$2.

### Levels of Giving

- **Sustaining Member** – Donate \$100 or more per year.
- **Benefactor** – Donate \$1,000 outright or include the Endowment Fund as a beneficiary.
- **Paul Harris Fellow** – Donate \$1,000 to the Annual Fund, Polio Plus, or an approved Foundation grant.
- **Bequest Society** – Donate \$10,000 or more via your estate plan.
- **Major Donor** – Make cumulative donations of \$10,000.
- **Arch Klumph Society** – Donate a total of \$250,000 or more during your lifetime.

(Named after the sixth president of Rotary International.)

# Tuscaloosa Rotary Memorial Foundation (TRMF)

- Charitable arm of our club – created in 1971. Tax deductible 501(c)(3) entity
- Separate and distinct from The Rotary Foundation (of Rotary International)
- Separate budget and separate Board of Directors from the Rotary Club of Tuscaloosa
- Board of Directors of TRMF for 2017-2018:
  - Morgan Mann (treasurer), Pam Parker (secretary), Steve Wiggins (terms end June 2018)
  - Rufus Lewis (president), Charles Nash, John Snider (terms end June 2019)
  - Jo Bonner, Joe May, Lynn Shaw (terms end June 2020)
  - Incumbent Rotary Club president is always a member
- Since 1971, about \$900,000 has been contributed by members for local community projects, e.g., Rotary International Student House on UA campus, DCH Regional Medical Center, Rotary Room at Tuscaloosa Library, Boy Scouts Camp Horne, Children's Hands-on-Museum, FOCUS on Senior Citizens, Girl Scouts Activity Center, United Cerebral Palsy Butterfly Park, Rotary Honor Flight, Tuscaloosa tornado relief, Salvation Army shelter.

## Rotary Publications and Websites

- *The Rotarian* – RI monthly magazine via snail mail; change to digital receipt at <https://my.rotary.org>.
- *The Nerve* – Our club's weekly bulletin via email.
- Club website – Public website: <https://my.rotary.org>.
- **DACdb website** – **District And Club database** – Password protected; official club directory, member photos; track your attendance, etc: <http://www.directory-online.com/Rotary>, click on "My Club."
- District website – [www.rotary6860.org](http://www.rotary6860.org).
- RI website – [www.rotary.org](http://www.rotary.org).

## Financial Information

### Obligations

- **Membership Fee** – Payment required prior to Induction..... **\$ 120**  
Returning members and transfers pay **\$30**
- **Dues** – Payable within 30 calendar days of emailed invoice ..... **\$ 700 per year**  
Option is available to pay **\$175 quarterly** or an **annual \$700 lump sum**  
Quarterly dues are pro-rated the quarter you join.
- **Lunch Guests** – per person, billed in arrears on your invoice ..... **\$ 13.50**  
Member is not charged a lunch guest fee if guest is a prospective member.

### Optional Donations

- The Rotary Foundation Contribution ..... **\$ 100 per year**  
Option is available to pay **\$25 quarterly** or an **annual \$100 lump sum or more**.
- Your contribution of **\$25/quarter** or **\$100/year or more** is forwarded to The Rotary Foundation. When your contributions total \$1,000, you become a **Paul Harris Fellow**.
- A Paul Harris Fellow does not have to be a Rotarian. You may select a family member or friend to become a Paul Harris Fellow when you reach the \$1,000 requirement for a second, third or more times. You also may pay any remaining financial balance in a lump sum to meet the requirement for you or the person of your choice to become a Paul Harris Fellow.

## History of Rotary Club of Tuscaloosa

In the spring of 1916, five men sat around a drug store table in the Alston Building, and discussed the idea of a Rotary Club for Tuscaloosa. Sam Clabaugh, secretary of the Chamber of Commerce, agreed to go to Montgomery to learn how to organize a club. The other four – Frank Blair, Edgar Clarkson, William Faulk, and Luther Davis, put up \$2 each to fund the trip.

Sam returned full of enthusiasm and called a meeting at May's Restaurant, which was attended by 35 local men. They decided to organize a club, and after ten meetings an application for charter was submitted to RI Headquarters. The club charter was received February 14, 1917 in the McLester Hotel, presided over by first president Frank Blair. Among other charter members were Catlin Cade, Frank Fitts, Sam Friedman, Victor Friedman and James Searcy.

Early meetings were devoted mostly to fun and fellowship, but membership growth stimulated the emergence of local service projects. New members Andy Lang and Joe Duckworth teamed up with Frank Fitts to promote support of the Salvation Army, YMCA, Red Cross, and Boy Scouts. Rotarians helped establish the local Community Chest, offered student loan funds, donated books to local high schools, sponsored student science fairs, and provided a language lab for a local school.

Tuscaloosa Rotary became an early participant in District affairs and Rotary International representation. James Thomas was the first District Governor from the club, only five years after the chartering, and the club has been tapped for twelve additional governors. Herbert Warner demonstrated his dedication to RI by attendance as a delegate to six international conventions. Community service continued to grow over the years, with current sponsorship of an Interact Club (for ages 12-18) at Hillcrest High School, and a Rotaract Club (for ages 18-30) at the University of Alabama, which was newly formed in 2017.

As integration came to the South, our club led the way in 1973 as the first Rotary Club in Alabama to induct a black member, and in 1998 as the first with a black president. The RI Constitution was amended in 1989 to include women in what had previously been an all-male club. Tuscaloosa was among the first in Alabama to cross this barrier.

During calendar year 2017, the Rotary Club of Tuscaloosa has been proudly celebrating its 100<sup>th</sup> anniversary!

## Rotary Fellowships

Rotary Fellowships consist of members worldwide who share a common interest in recreational activities, sports, hobbies or professions. **See the following pages for a list of 72 international Rotary Fellowships.**





# ROTARY FELLOWSHIPS

Rotary Fellowships consist of members who share a common interest in recreational activities, sports, hobbies, or professions. These groups help expand skills, foster vocational development, and enhance the Rotary experience by exploring interests while developing connections around the world.

## OVERVIEW

- Help participants make lasting friendships outside their own club, district, or country
- Advance Rotary's public image and identity
- Serve as an incentive for joining Rotary and for maintaining active membership

## ORGANIZATION

- Function independently of Rotary International by establishing their own rules, dues requirements, and administrative structure.
- Are open to Rotarians, their family members, as well as participants and alumni of all Rotary and Foundation programs.

## STARTING A NEW FELLOWSHIP

If your recreational or vocational interest isn't represented by Rotary's current Fellowships, contact [rotaryfellowships@rotary.org](mailto:rotaryfellowships@rotary.org) for information about starting a new group.

## ADDITIONAL INFORMATION

Visit [www.rotary.org/fellowships](http://www.rotary.org/fellowships) for additional resources on Rotary Fellowships.

Contact [rotaryfellowships@rotary.org](mailto:rotaryfellowships@rotary.org) with questions.



**See next page for a list of 72 Fellowships**



# ROTARY FELLOWSHIPS

<b>4 X 4 Vehicles</b>	<a href="http://rotary4x4.org.za">http://rotary4x4.org.za</a>	<b>Jazz</b>	<a href="http://www.rotaryjazz.com">www.rotaryjazz.com</a>
<b>Amateur Radio</b>	<a href="http://www.ifroar.org">www.ifroar.org</a>	<b>Latin Culture</b>	<a href="https://www.facebook.com/RotariosLatinos/?fref=ts">https://www.facebook.com/RotariosLatinos/?fref=ts</a>
<b>Antique Automobiles</b>	<a href="http://www.achafr.eu">www.achafr.eu</a>	<b>Lawyers</b>	<a href="http://www.rotarianlawyersfellowship.org">www.rotarianlawyersfellowship.org</a>
<b>Authors and Writers</b>	<a href="https://www.linkedin.com/grp/home?gid=4860168">https://www.linkedin.com/grp/home?gid=4860168</a>	<b>Magicians</b>	<a href="http://www.rotarianmagician.org">www.rotarianmagician.org</a>
<b>Beer</b>	<a href="http://www.rotarybrew.org">www.rotarybrew.org</a>	<b>Magna Graecia</b>	<a href="http://www.fellowshipmagnagraecia.org">www.fellowshipmagnagraecia.org</a>
<b>Bird Watching</b>	<a href="http://www.ifbr.org">www.ifbr.org</a>	<b>Marathon Running</b>	<a href="http://www.rotarianrun.org">www.rotarianrun.org</a>
<b>Bowling</b>	<a href="http://www.rotariansbowling.org/">http://www.rotariansbowling.org/</a>	<b>Military Veterans</b>	<a href="http://rotarianveterans.org/">http://rotarianveterans.org/</a>
<b>Canoeing</b>	<a href="http://sites.google.com/site/canoeingrotarians/">http://sites.google.com/site/canoeingrotarians/</a>	<b>Motorcycling</b>	<a href="http://www.ifmr.org">www.ifmr.org</a>
<b>Caravanning</b>	<a href="http://www.rotarianscaravanning.org.uk">www.rotarianscaravanning.org.uk</a>	<b>Music</b>	<a href="http://www.ifrm.org">www.ifrm.org</a>
<b>Chess</b>	<a href="http://www3.sympatico.ca/brian.clark">www3.sympatico.ca/brian.clark</a>	<b>Old and Rare Books</b>	<a href="http://www.rotaryoldbooks.org">www.rotaryoldbooks.org</a>
<b>Computer Users</b>	<a href="http://www.icufr.org/">http://www.icufr.org/</a>	<b>Past District Governors</b>	<a href="http://www.pdgsfellowship.org">www.pdgsfellowship.org</a>
<b>Cooking</b>	<a href="http://www.rotariangourmet.com">www.rotariangourmet.com</a>	<b>Photographers</b>	<a href="https://www.facebook.com/groups/IFRP1/">www.facebook.com/groups/IFRP1/</a>
<b>Convention Goers</b>	<a href="http://www.conventiongoers.org">www.conventiongoers.org</a>	<b>Police and Law Enforcement</b>	<a href="http://www.polepr.org">www.polepr.org</a>
<b>Corporate Social Responsibility</b>	<a href="http://www.csr-rotarianfellowship.org/">http://www.csr-rotarianfellowship.org/</a>	<b>Quilters and Fiber Artists</b>	<a href="http://www.rotariansquilt.org">www.rotariansquilt.org</a>
<b>Cricket</b>	<a href="http://www.rotarycricket.org">www.rotarycricket.org</a>	<b>Railroads</b>	<a href="http://www.ifrr.info">www.ifrr.info</a>
<b>Cruising</b>	<a href="https://www.facebook.com/groups/cruisingrotariansfellowship">www.facebook.com/groups/cruisingrotariansfellowship</a>	<b>Recreational Vehicles</b>	<a href="http://www.rvfrinternational.com/home.html">http://www.rvfrinternational.com/home.html</a>
<b>Curling</b>	<a href="http://www.curlingrotarians.com">www.curlingrotarians.com</a>	<b>Rotary Global History</b>	<a href="http://www.rghfhome.org">www.rghfhome.org</a>
<b>Cycling</b>	<a href="http://www.cycling2serve.org">www.cycling2serve.org</a>	<b>Rotary Heritage and History</b>	<a href="http://www.rhhif.org">www.rhhif.org</a>
<b>Doll Lovers</b>	<a href="http://www.rotarydlf.org">www.rotarydlf.org</a>	<b>Rotary Means Business</b>	<a href="http://www.rotarymeansbusiness.com">www.rotarymeansbusiness.com</a>
<b>Draughts</b>	<a href="mailto:boyeade@hotmail.com">boyeade@hotmail.com</a>	<b>Rotary on Pins</b>	<a href="https://www.facebook.com/RotaryonPinsFellowship">www.facebook.com/RotaryonPinsFellowship</a>
<b>E-Clubs</b>	<a href="http://rotarianseclubfellowship.org/">http://rotarianseclubfellowship.org/</a>	<b>Rotary on Stamps</b>	<a href="http://www.rotaryonstamps.org">www.rotaryonstamps.org</a>
<b>Editors and Publishers</b>	<a href="https://www.facebook.com/groups/IFREP/">www.facebook.com/groups/IFREP/</a>	<b>Rowing</b>	<a href="http://www.iforr.org">http://www.iforr.org</a>
<b>Educators</b>	<a href="http://www.rotarianeducators.org">www.rotarianeducators.org</a>	<b>Russian Culture</b>	<a href="mailto:Germany.eckstein.artur@googlemail.com">Germany.eckstein.artur@googlemail.com</a>
<b>Environment</b>	<a href="http://www.envirotarians.org">www.envirotarians.org</a>	<b>Scouting</b>	<a href="http://www.ifsr-net.org">www.ifsr-net.org</a>
<b>Esperanto</b>	<a href="http://radesperanto.monsite-orange.fr/index.html">http://radesperanto.monsite-orange.fr/index.html</a>	<b>Scuba Diving</b>	<a href="http://www.ifrsd.org">www.ifrsd.org</a>
<b>Ethics</b>	<a href="https://www.facebook.com/groups/1133950666630100/">www.facebook.com/groups/1133950666630100/</a>	<b>Shooting Sports</b>	<a href="http://www.shootingsportrotarians.org">www.shootingsportrotarians.org</a>
<b>Fishing</b>	<a href="https://www.facebook.com/groups/InternationalFellowshipoffishingRotarians">www.facebook.com/groups/InternationalFellowshipoffishingRotarians</a>	<b>Singles</b>	<a href="http://www.rsinternational.net">www.rsinternational.net</a>
<b>Flying</b>	<a href="http://www.iffr.org">www.iffr.org</a>	<b>Skiing</b>	<a href="http://www.isfrski.org">www.isfrski.org</a>
<b>Genealogy</b>	<a href="https://www.facebook.com/RIfellowship">https://www.facebook.com/RIfellowship</a>	<b>Social Networks</b>	<a href="http://www.rosnf.net">www.rosnf.net</a>
<b>Go</b>	<a href="http://www.gpfr.jp">www.gpfr.jp</a>	<b>Table Tennis</b>	<a href="https://www.facebook.com/Table-Tennis-Fellowship-of-Rotarians-1130180430367736/">www.facebook.com/Table-Tennis-Fellowship-of-Rotarians-1130180430367736/</a>
<b>Golf</b>	<a href="http://www.igfr-international.com">www.igfr-international.com</a>	<b>Tennis</b>	<a href="http://www.itfr.org">www.itfr.org</a>
<b>Health Professionals</b>	<a href="https://www.rotary-site.org/health-professionals">https://www.rotary-site.org/health-professionals</a>	<b>Total Quality Management</b>	<a href="http://www.rotarytqm.it">www.rotarytqm.it</a>
<b>Home Exchange</b>	<a href="http://www.rotarianhomeexchange.com">www.rotarianhomeexchange.com</a>	<b>Travel and Hosting</b>	<a href="http://www.ithf.org">www.ithf.org</a>
<b>Honorary Consuls</b>	<a href="mailto:kappenberger@gmail.com">kappenberger@gmail.com</a>	<b>Wellness and Fitness</b>	<a href="mailto:kappenberger@gmail.com">kappenberger@gmail.com</a>
<b>Horseback Riding</b>	<a href="mailto:franz.gillieron@hispeed.ch">franz.gillieron@hispeed.ch</a>	<b>Whisk(e)y</b>	<a href="http://www.whiskeydrum.org">www.whiskeydrum.org</a>
<b>Internet</b>	<a href="http://www.roti.org">www.roti.org</a>	<b>Wine</b>	<a href="http://www.rotarywine.net">www.rotarywine.net</a>
<b>Italian Culture</b>	<a href="https://www.linkedin.com/groups/6528431/profile">https://www.linkedin.com/groups/6528431/profile</a>	<b>Yachting</b>	<a href="http://www.iyfr.net">www.iyfr.net</a>